



Wall: Timber construction *Windtight and rainproof on the outside*

Mounting facade membrane for closed facades



- Apply Majvest 200 with the lettering facing you



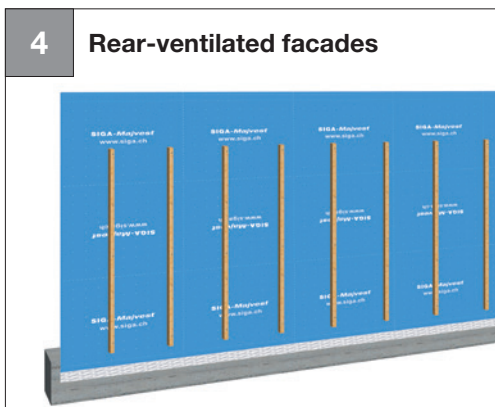
For closed facades:

- Align Wigluv centrally along the overlap and secure in place
- Apply it without tension and creases and press on **firmly**



After sealing:

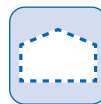
- For final attachment of the membrane mount counter slatting **in structure direction directly on the bearing structure**



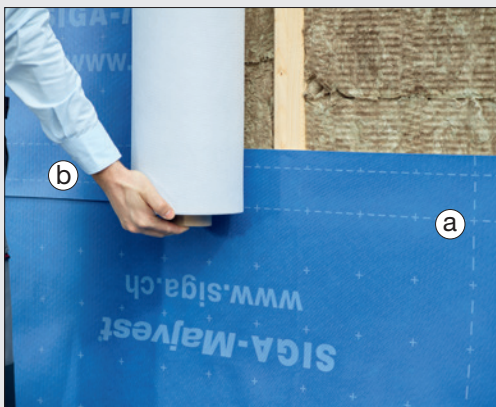
4 Rear-ventilated facades

- Majvest 200 is suitable for rear-ventilated facades with closed facade covering

Wall: Timber construction Windtight and rainproof on the outside



Tips and tricks



Majvest 200 overlap:

- Align Majvest 200 with the (a) overlapping line and lay it.
- Align Wigluv with the (b) bonding line and bond it.
- Press the bond on **firmly**.



Majvest 700 SOB overlap:

- Align Majvest 700 SOB with the lettering (a) or the backing strip (b) and lay it.
- Remove the backing strip and bond SOB.
- **Or else without SOB:** Align Wigluv black centrally and bond.
- Press the bond on **firmly**.



Majvest® 200

P. 133



Wigluv® 60

P. 128